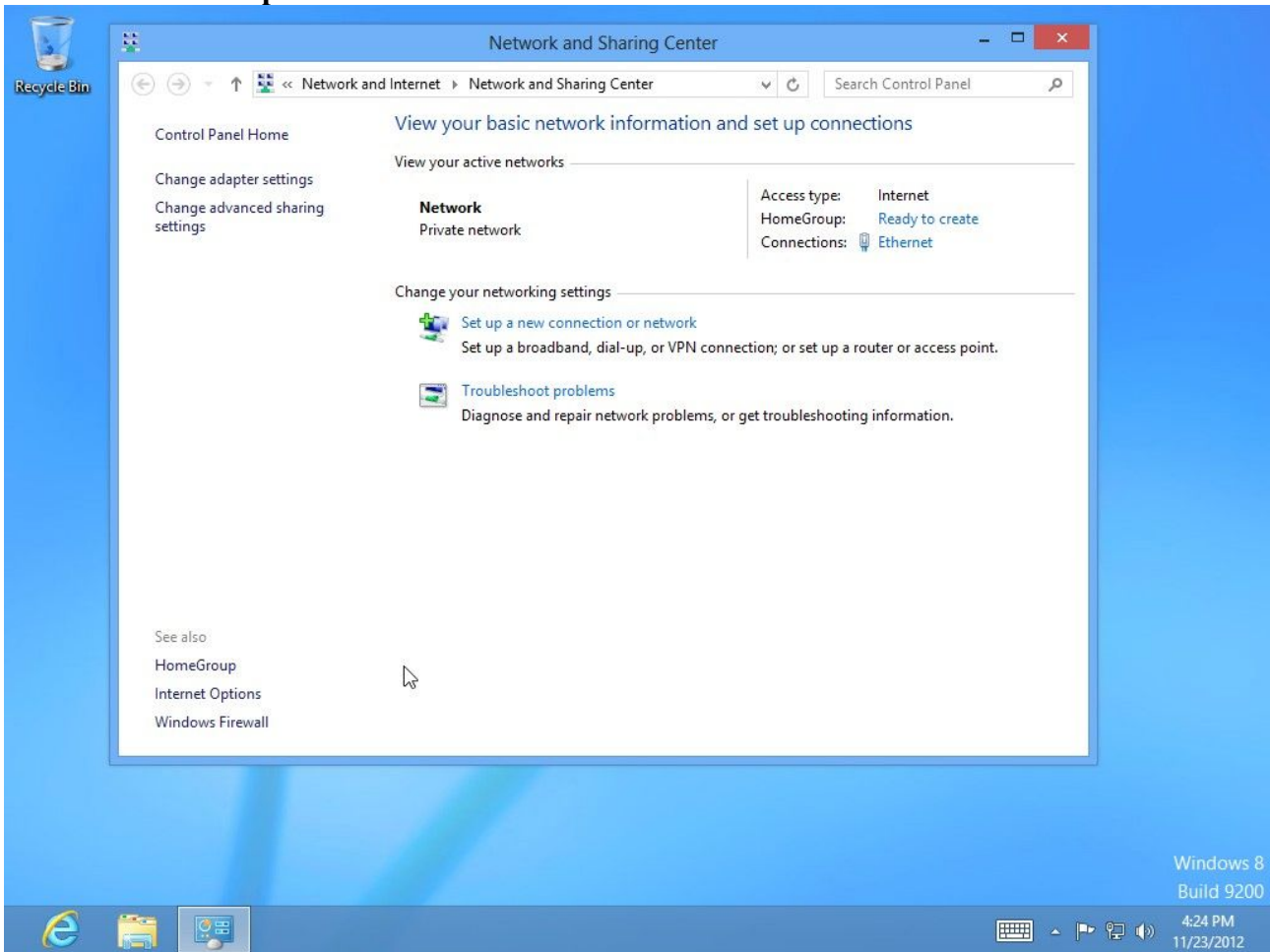
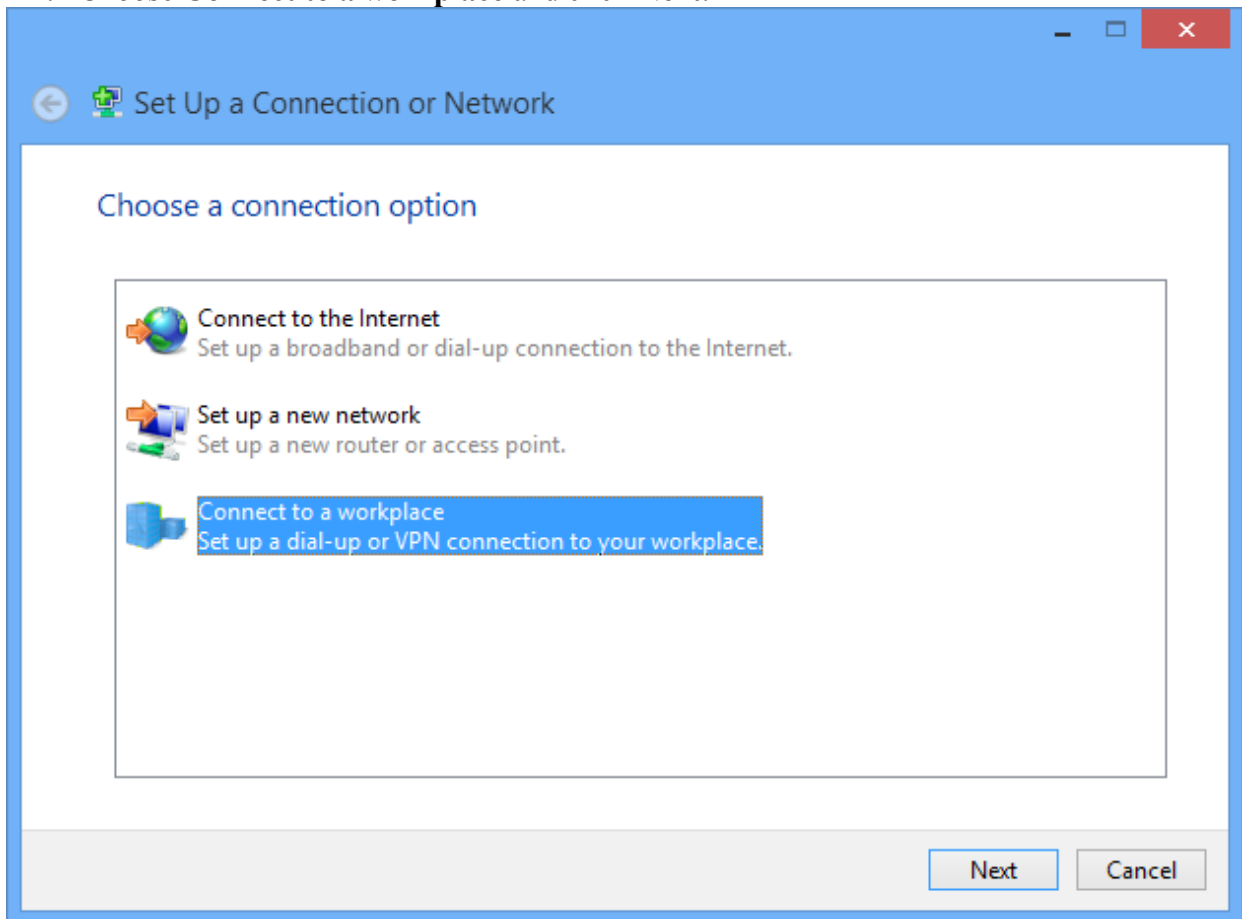


Windows 8 PPTP configuration guide

1. Enter the “Control Panel” from the start menu. Open the “Network and Sharing Center” and choose **Set up a new connection or network**.



2. Choose **Connect to a workplace** and click **Next**.

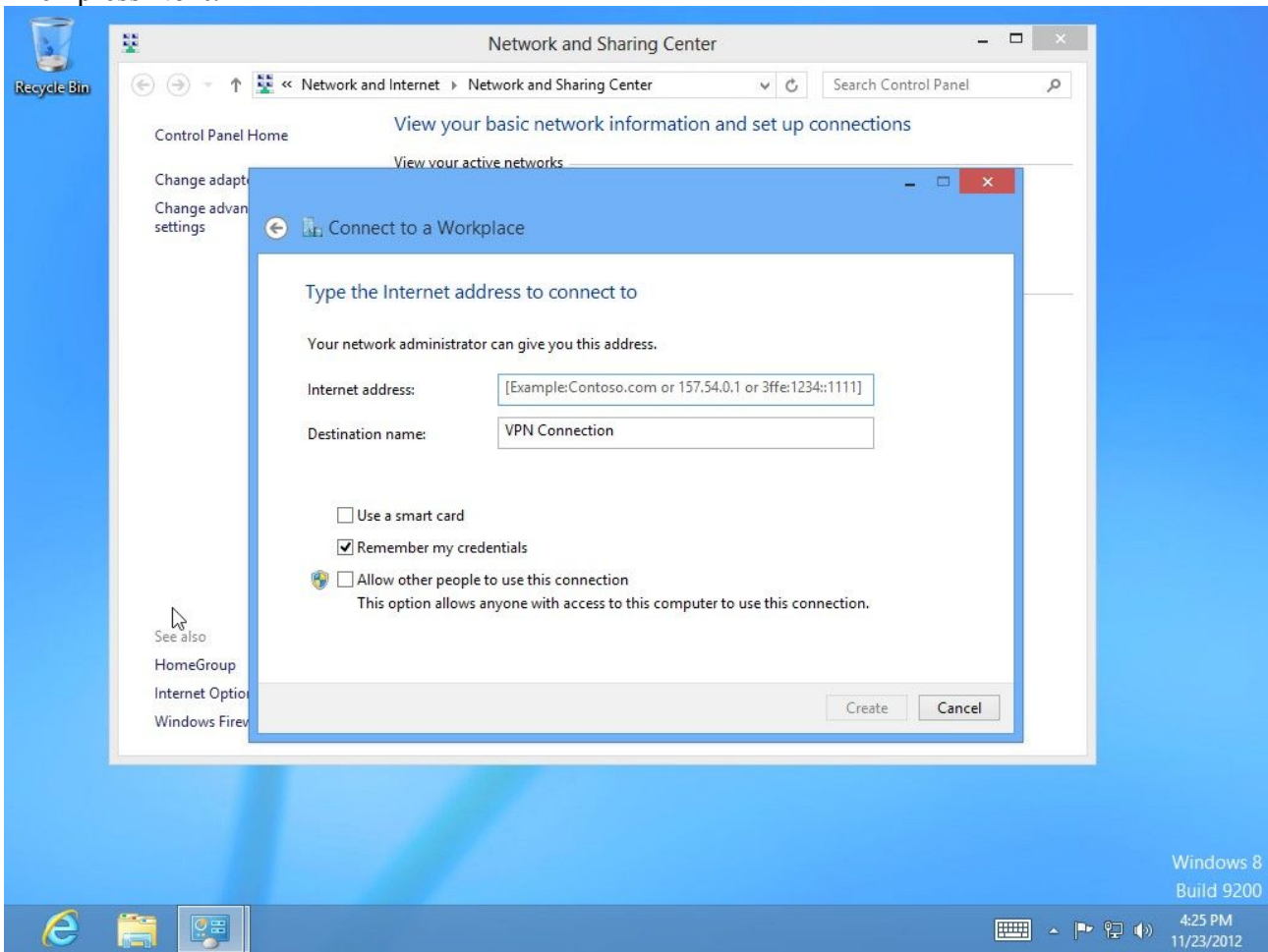


3. Choose **Use my Internet connection (VPN)**.



Note: If prompted for "Do you want to use a connection that you already have?", select No, create a new connection and click Next.

4. In the field **Internet address**, type: se-pptp.vpntunnel.com
In the field **Destination name**, type: Vpntunnel
Then press **Next**.



4. Enter your VPNtunnel login details, then click **Create**.



5. In the **Networks** you can now see the connection you have just created.

